

Dolphin



Endoscopy System for Epidural Space
and Pulsed Radiofrequency

Full minimally invasive procedure
for the treatment of acute and chronic pain

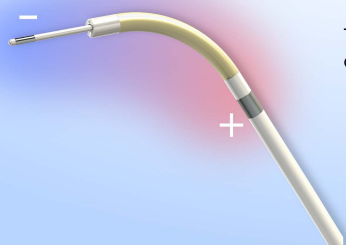
Dolphin device has been created specifically for minimally invasive endoscopic diagnosis of epidural channel.

It is a system of research and treatment of acute and chronic back pain, which allows the vision of epidural channel and internal structures with the most flexible and performant optics, ensuring a perfect vision of real pathophysiologic conditions of the epidural space.

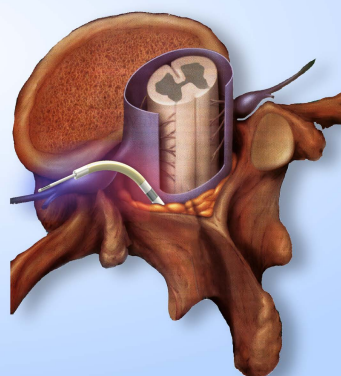


DPRF 31-9

DP-CATH



Treatment of ganglion



Bipolar Radiofrequency

With the Pulsed Radiofrequency you can effectively treat the ganglion of the posterior roots, joining two interventional techniques in a single procedure.

The presence of the two electrodes lets to achieve the best from radio waves, being these ones irradiated in bipolar mode.

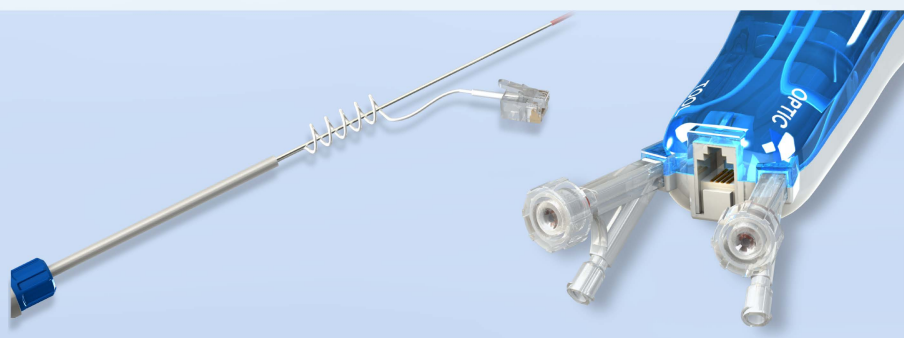
The system works with treatments of 5 min that can be repeated on multiple levels and nerve zones, in the same operative session.

Available also in classic version for standard epiduroscopy procedures.



DP 31-9

The operating channel is compatible with use of balloons, graspers, electroscalpel probes and Pulsed Radiofrequency probe (only on DPRF 31-9).



Exclusive system Bipolar PRF (Bipolar Pulsed Radio Frequency). By connecting the probe to the videoguide, you can use the RF generator during the epiduroscopy procedure.

Compatible use on patients with active prostheses.



Device	Code	Description
Dolphin	DP 31-9	Videoguide with watering
Dolphin PRF KIT	DPRF 31-9	Videoguide with watering and Pulsed Radiofrequency
Electrified Catheter	DP-CATH	Electrified probe with thermocouple

Distributor